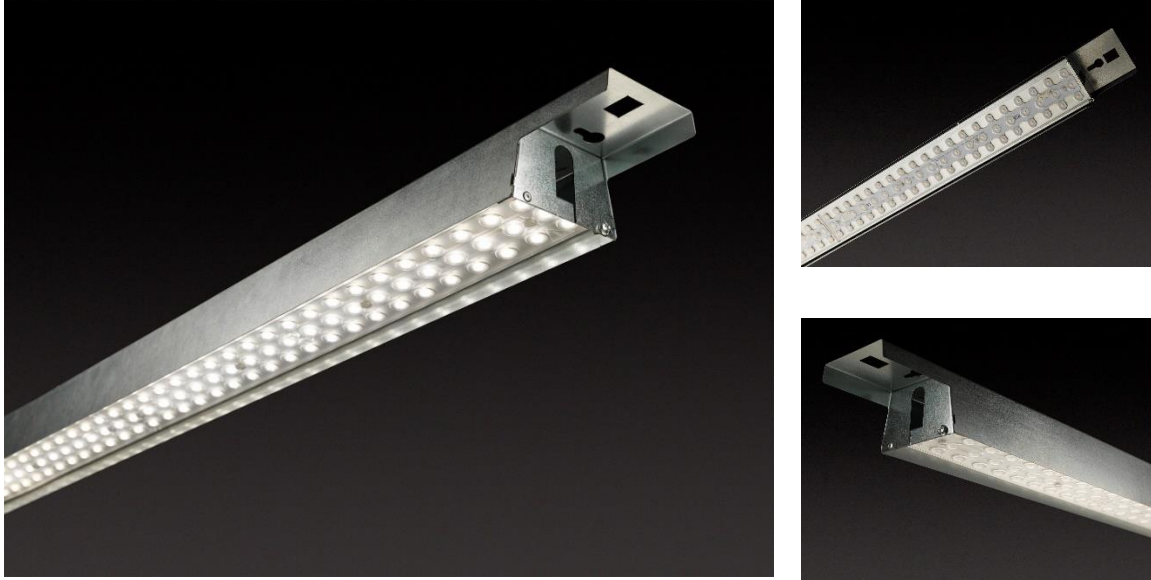


## INDUSTRY LENS COMFORT



### Type of luminaire

Innovative LED luminaire especially designed industrial applications. It is suitable for production offices, industrial facilities, warehouse and logistical centers. It has simple yet proper design with different optical solutions.

### Key advantages

- energy efficient luminaire with more than 140 lm/W
- long life-span
- completely maintenance free (no need for lamp replacement)
- easy mounting
- high-quality of the light emitted with CRI>80
- various selection for colour temperature – between 3000 and 6500K

### Application

- Industrial premises where IP23 is good enough
- warehouse solutions
- Shops
- Different production facilities

## Material and finish

The housing of Industry Lens Comfort is made from zinc galvanized steel. The luminaire optic is sealed by special lenses with high-efficiency of more than 95%. The used LED module and drivers are with high-quality with minimum ripple (less than 1%).

*\*all data bellow is for the 1200mm version*

PRODUCT REVIEW	
Technology	LED
Dimmable	No (DALI on demand)
Type	Integrated LED
Mount	
Control gear type	Electronic
Housing material	Zinc covered steel (not painted)
Lumen maintenance L70/B50, L80/B10	>60 000
Photo biological Risk Group	0
Luminaire efficacy (lm/W)	143lm/W
SDCM	3
Fixture Luminous Flux	
Glare control	UGR < 20
Color temperature (K)	3000-6500
IP	23
IK	07

GENERAL DATA	
Ordering No	
Product name	Industry Lens Comfort
General applications	Industrial purposes
Sales pack quantity	1
Operating temperature range (°C)	25
Housing color	N/A

ELECTRICAL DATA	
Luminaire Input Power (W)	63
Inrush duration (µs)	245
Inrush current (A)	36.9
Drive current (mA)	500
Max luminaires per 10A C Breaker	14
Max luminaires per 13A C breaker	19
Max luminaires per 16A C Breaker	23
Max luminaires per 10A B breaker	8
Max luminaires per 13A B breaker	11
Max luminaires per 16A B breaker	14
CRI	>80
Electrical protection	Class I



ELUX Ltd. reserves the rights to further improve the listed luminaires.

Glow wire test (°C)	850
Lamp energy label (class)	A++
Nominal input voltage	220...240
Nominal frequency (Hz)	50...60

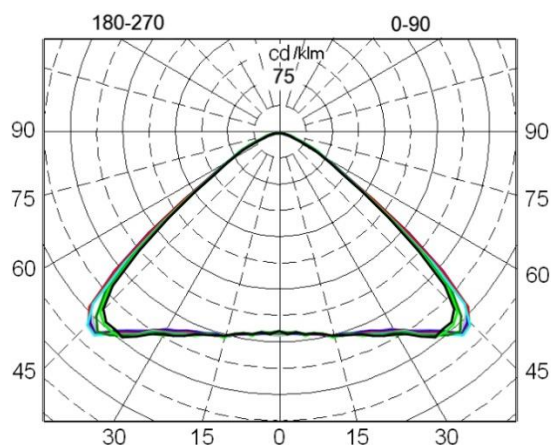
#### PHYSICAL DATA

Lamp included	Yes
Included lamp	Integrated LED
Nominal product height (mm)	86,8
Nominal product width (mm)	84
Nominal product length (mm)	1635
Weight (kg)	3.8
Diffuser finish	Optic
Diffuser material	PMMA

#### PACKAGING

Single packaging type	Carton
Packaging outer length (cm)	165
Packaging outer width (cm)	10
Packaging outer height (cm)	10
Single package volume (dm3)	16.5
Single product gross weight (kg)	4.2
Single packaging weight (kg)	0.4

#### PHOTOMETRY



ELUX Ltd. reserves the rights to further improve the listed luminaires.